

# IBMARLF Brass Rope Eye Insert • Spec Sheet

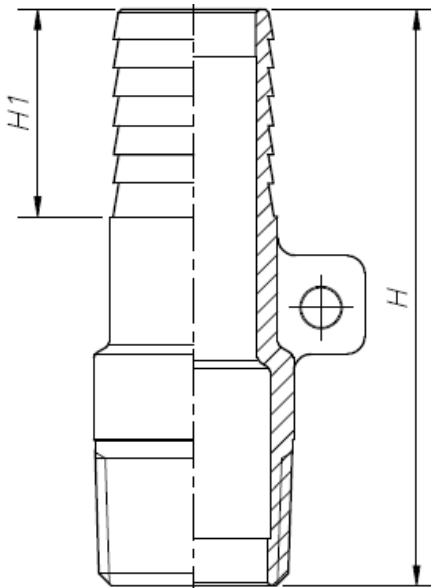


## FEATURES & BENEFITS

- Lead Free Brass\*
- Insert x Male Adapter
- Sizes 1" & 1-1/4"

## MATERIAL SPECIFICATIONS

Part	Material
Body	Brass C46400



## DIMENSIONS

Part	Size	Barb	H	H1
IBMAR03LF	1"	6	1.41	0.59
IBMAR04LF	1-1/4"	6	1.41	0.67



\* These product complies with 0.25% weighted average lead content on wetted surfaces in accordance with Safe Water Drinking Act (SDWA) / Federal Public Law No. 111-380.

Global sourcing. National compliance. Local service.

**CALIFORNIA** 5593 Fresca Dr., La Palma CA 90623 • Toll Free: 866-532-8306 • Fax: 866-532-8307  
**TEXAS** 1150 Silber Rd., Houston TX 77055 • Toll Free: 800-935-5456 • Fax: 713-680-2999  
**NEW YORK** PO Box 27, Rt. 22, Brewster NY 10509 • Toll Free: 800-431-2082 • Fax: 845-278-9056  
 WEB: [www.matco-norca.com](http://www.matco-norca.com) EMAIL: [mail@matco-norca.com](mailto:mail@matco-norca.com)